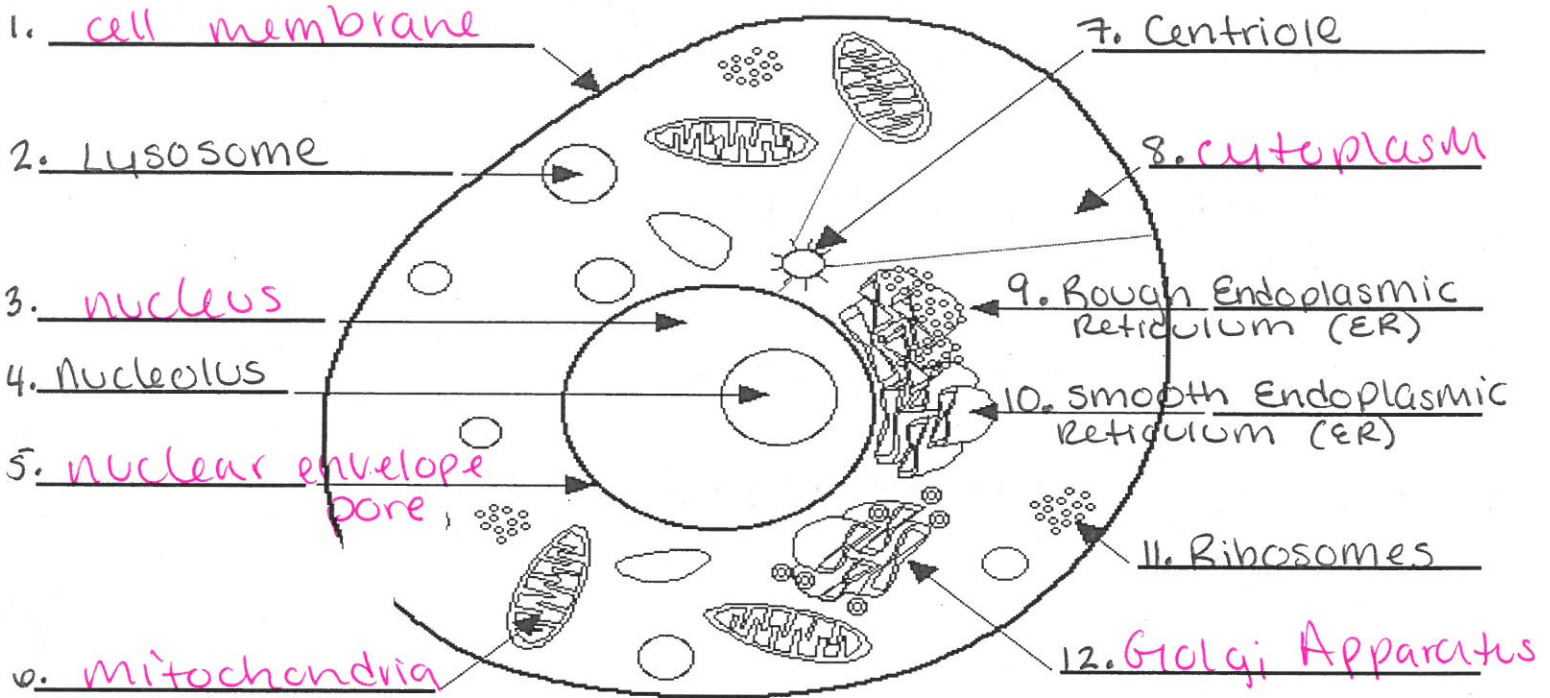


Name: KEY

Biology Chapter 7

Plant and Animal Cell Notes

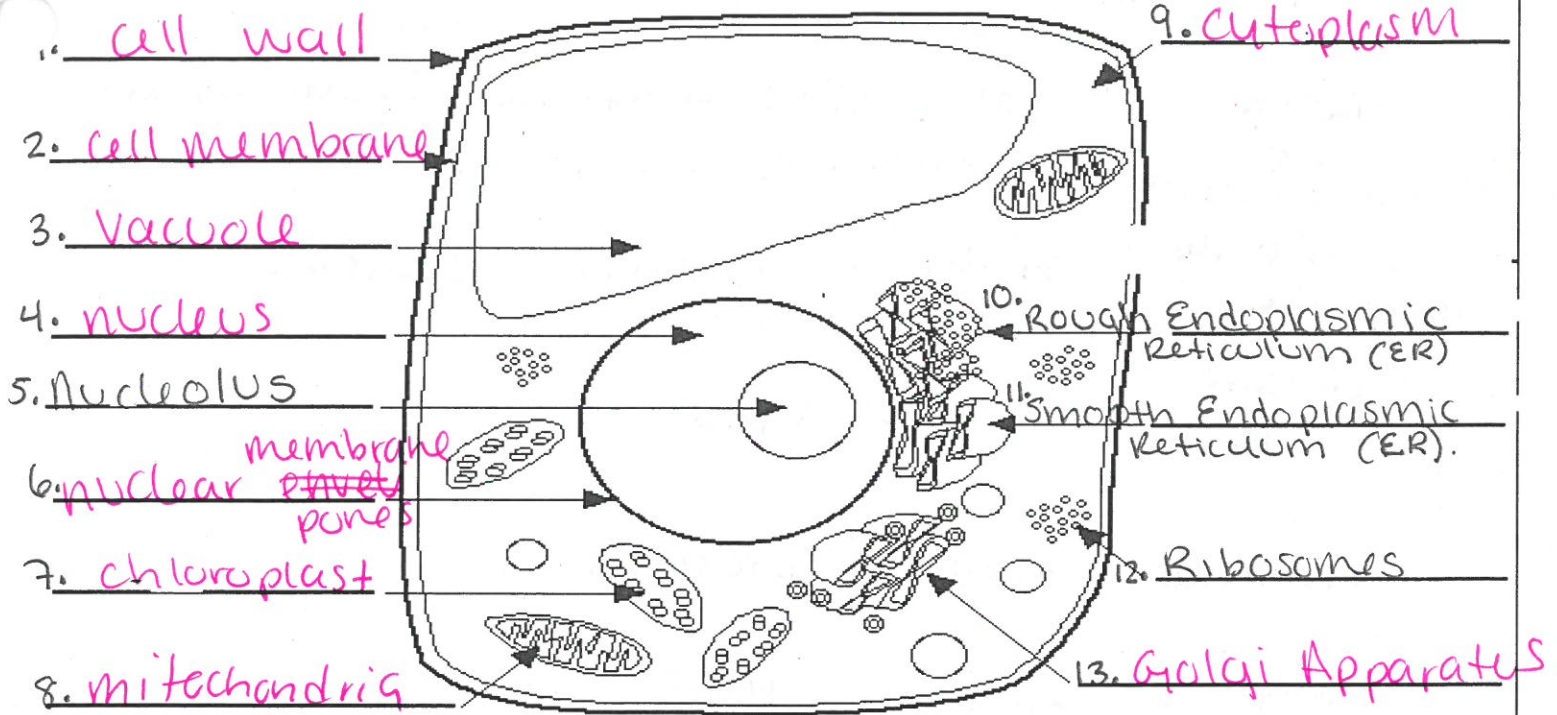
Cross-Section of an Animal Cell



Number	Organelle	Function
1.	cell membrane	controls the materials that enter/exit the cell.
2.	Lysosome	Breaks down & destroys old cell parts, cell invaders and eliminates them
3.	nucleus	the control center of the cell where genetic information is stored.
4.	nucleolus	where ribosomes are made.
5.	nuclear envelope/pores	allows materials/RNA to leave the nucleus while keeping DNA safe.
6.	mitochondria	Takes food and turns it into energy the cell can use.

7.	Centriole	Helps cells divide by pulling chromosomes (DNA) apart.
8.	cytoplasm	Jelly like material that holds cell organelles in place
9.	Rough ER	Makes + modifies proteins
10.	Smooth ER	Makes lipids
11.	Ribosomes	Make proteins
12.	Golgi Apparatus	ships/packages/modifies cell parts.

Cross-Section of a Plant Cell



Number	Organelle	Function
1.	cell wall	Provides additional structure + support in plant cells.
2.	cell membrane	Allows materials to enter/exit the cell
3.	vacuole	Stores water, nutrients in plants and provides support for the cell.
4.	nucleus	Controls the cell and is where genetic information is stored
5.	nucleolus	where ribosomes are made.
6.	nuclear membrane (pore)	allows material/RNA to leave the nucleus while keeping DNA safe.
7.	chloroplast	Takes solar energy and uses it to make food for the cell to use.

8.	mitochondria	Takes food → turns it into energy the cell can use
9.	Rough ER Cyttoplasm	Jelly-like material that holds organelles in place.
10.	Smooth Rough ER	make → modifies proteins
11.	SMOOTH ER	makes lipids
12.	Ribosomes	makes proteins
13.	Golgi Apparatus	packages, modifies, & ships cell parts within & out of the cell.

